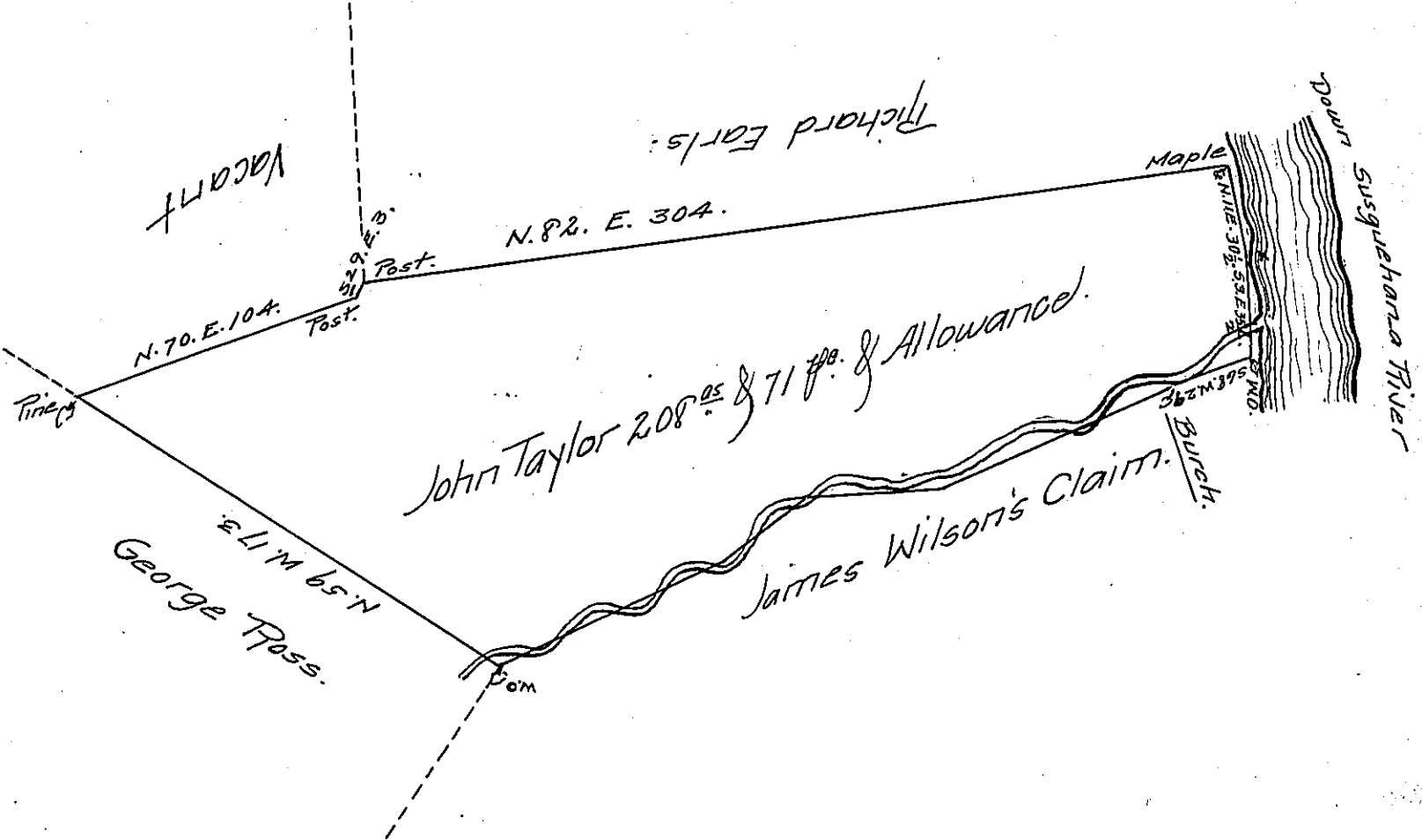


Courses & Distances from the Burch.  
 up the run to the White oak 90.  
 S. 56. W. 17 1/2.  
 S. 70 W. 68.  
 S. 84. W. 49.  
 S 53. W. 36 3/4  
 S. 73. W. 46.  
 S. 65 1/2. W. 35  
 252 1/4.



The Draught of a Tract of Land Situate in Greenwood Township  
 Cumberland County Containing Two Hundred and eight Acres and 71 Per-  
 ches and Allowance of Six 1/2 Cent for Roads &c. Surveyed November 11<sup>th</sup>  
 1791 in pursuance of a Warrant granted to John Taylor Dated August 3<sup>rd</sup>  
 1787.

J. Sam'l Lyon D.S.

To Daniel Brodhead Esquire  
 Surveyor General of Pennsylvania

IN TESTIMONY that the above is a copy of the original remaining on file in  
 the Department of Internal Affairs of Pennsylvania, made  
 conformably to an Act of Assembly approved the 16th day of  
 February, 1833, I have hereunto set my Hand and caused  
 the Seal of said Department to be affixed at Harrisburg,  
 this sixth day of April 1907.

*Isaac B. Brown*  
 Secretary of Internal Affairs.